

## MODULE 1 (1 DAY)



**Delivering the Low Carbon Vision:** how to achieve low energy and CO<sub>2</sub> buildings

Learn how to write an effective brief for a low energy, low carbon building and how best to champion low energy practices in procurement, design, construction and building management.

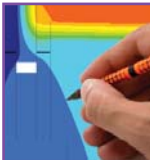
## MODULE 2 (1 DAY)



**Understanding Energy in Buildings:** how buildings work as an energy system

Understand how to accurately calculate the energy use of buildings, minimise heat loss and recognize the energy and CO<sub>2</sub> implications of building form, site and orientation, as well as different building and renewable technologies.

## MODULE 3 (1 DAY)



**An Introduction to Passivhaus and the AECB Energy Standards**

This course provides a basic introduction to the overall design philosophy of low energy, low carbon buildings, based on the Passivhaus standard and introduces the PHPP building performance simulation software.

## MODULE 4 (1 DAY)



**CarbonLite in Practice:** a case study-based system to the AECB energy standards

Share the experiences of those who have successfully implemented low energy building to AECB standards. The opportunities and pitfalls of low energy building in practice. Persuading your clients to aim for the AECB standards.

## MODULE 5 (2 DAYS)



**Designing Low Energy, Low Carbon Buildings:** delivering whole building low energy performance

Methodologies and tools to meet the AECB standards. A detailed look at the key design elements to deliver whole building low energy performance, including building services, appliances and equipment, and post-occupancy energy measurement.

## MODULE 6 (2 DAYS)



**Using PHPP in a Building Certification Process:** apply PHPP to a range of building types and improve designs to meet the standards

Learn to apply PHPP to a range of building types and improve designs to meet AECB standards. Demonstrate competence in using PHPP to certify compliance with the standards.

Courses are open to AECB members and non-members.

All of the above training courses can be run on a bespoke basis as in-house training for a group of participants from the same company.

**For further information visit [www.carbonlite.org.uk](http://www.carbonlite.org.uk)**